

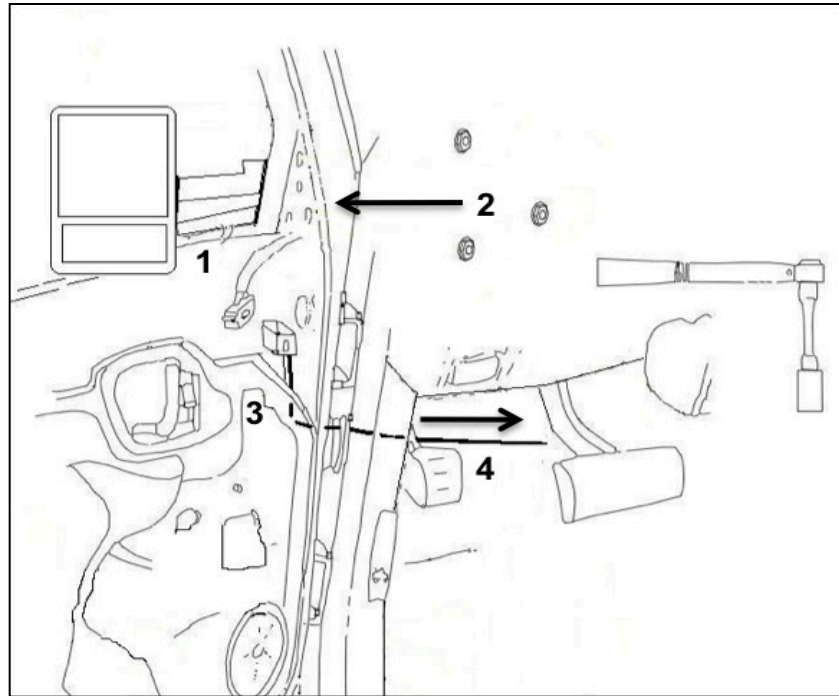
LED Turn Signal Installation Instructions

Items included in this bag:

2 Reels of Black/Red LED Extension Wire
(LH is 3 meters/RH is 5 meters)
2 Red Wire Taps
2 Ring Connectors
This Instruction Manual

Required tools for this installation:

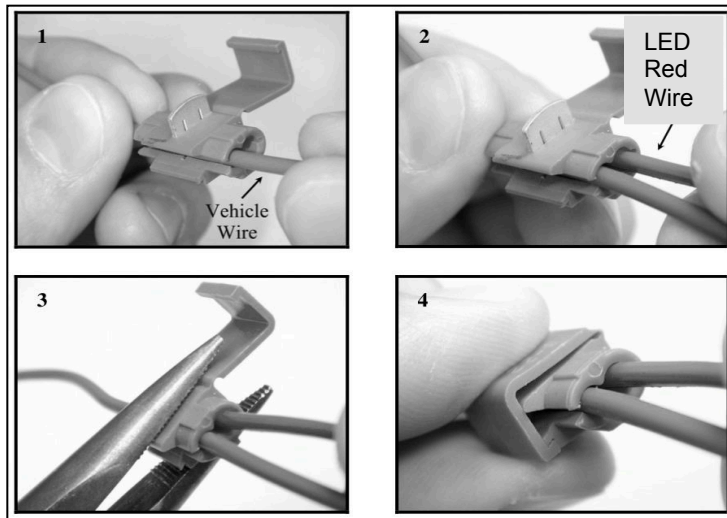
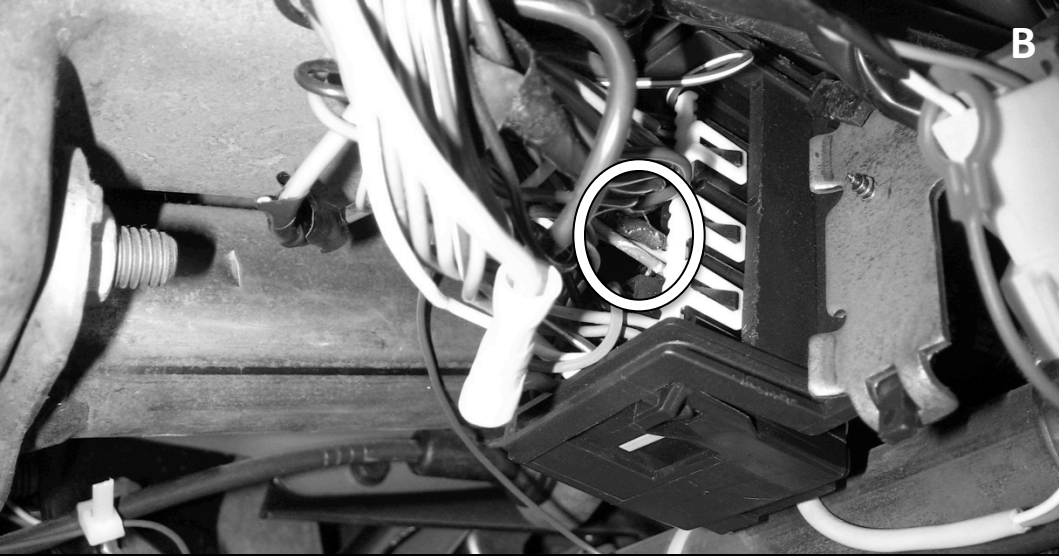
10mm Socket Wrench
Electrical Tape
Multimeter
Needle Nose Pliers



1. Feed mirror wires into door and set mirror in place.
2. Tighten the mirror with the included mounting nuts and support bracket. Reconnect the mirror plug (if the mirror comes with power glass).
3. Connect the supplied black(-)/red(+) extension wire into the mirror-side LED connector.
4. Pass the extension wire through the rubber boot between the door and the vehicle and into the area under the dash.



Connector Located Under Dash Here.



- A. Ground the black needle/clip(-) from the multimeter to a metal surface. (Tip: Search “How to use a multimeter?” on YouTube if you don’t already know how to test for DC 12V on your car.)
- B. Probe the turn signal wires directly using the junction block connector located under dash (picture A). The LIGHT BLUE & DARK BLUE wires are grouped together on the junction block. See circled part on picture B. (Tip: If the connector is too tight to probe. You can tape a straightened paper clip to the tester’s needle to probe.)
- C. Driver Side: Locate the LIGHT BLUE† wire from within the wire bundle. Turn the ignition key so that electrical power is on and activate the driver side turn indicator. Probe the wire with the multimeter to verify that flashing turn indicator power is present. Deactivate the turn indicator and depress the brake to make sure you have not located the rear turn signal wire. Label the wire as **“Front Driver Side Turn”**. [Note: Triple check to ensure you have the correct indicator wire, as there are several of them to choose from and don’t misrecognize the interior dome light wire as the indicator wire.]
- D. Passenger Side: Locate the DARK BLUE† wire, activate the passenger side indicator and repeat step C. When found, label that wire as **“Front Passenger Side Turn”**.

† On some models, the wires may have different colors. In that case, you will need to probe other wires to find the correct indicator wire.

1. After both turn indicator wires are found, use the supplied wire tap and follow the 4 steps above to splice mirror’s RED LED wire into the indicator wire.
2. Splice the RED wire from the driver side harness into the vehicle wire previously labeled , **“Front Driver Side Turn”**.
3. Splice the RED wire from the passenger side harness into the vehicle wire previously labeled , **“Front Passenger Side Turn”**.
4. Strip the and twist together the ends of the black wires from each harness and ground to a suitable location on the metal framework of the vehicle.
5. Activate each turn indicator to verify that the LED turn signals are working.
6. Replace any door accessories, door panels, plastic moldings, and trim pieces to finish installation.